

Parameters

Electrical Parameters

Product name	M/P01.2-A Panel 1Rocker Controller
	M/P02.2-A Panel 2Rocker Controller
	M/P03.2-A Panel 3Rocker Controller
	M/P04.2-A Panel 4Rocker Controller
Working Voltage (from HDL-M/PCI.1/3)	21~30VDC
Bus interface	KNX/EIB
Static current	< 15mA
KNX Bus terminal	(Red/Grey)0.6-0.8mm single core cable

Environmental Conditions

Working temperature	-5°C~45°C
Working relative Humidity	Up to 90%
Storage temperature	-20°C~+60°C
Storage relative humidity	Up to 93%

Approved

CE, RoHS

KNX

Product information

Dimensions	H86 x W86x D10.5(mm)(EU)
	H86x W116x D10.5(mm)(US)
Net weight	106.8g (EU)
	129.7g (US)
Housing material	Glass, Plastics, Spray paint
Protection rating	IP 20

Important Notes

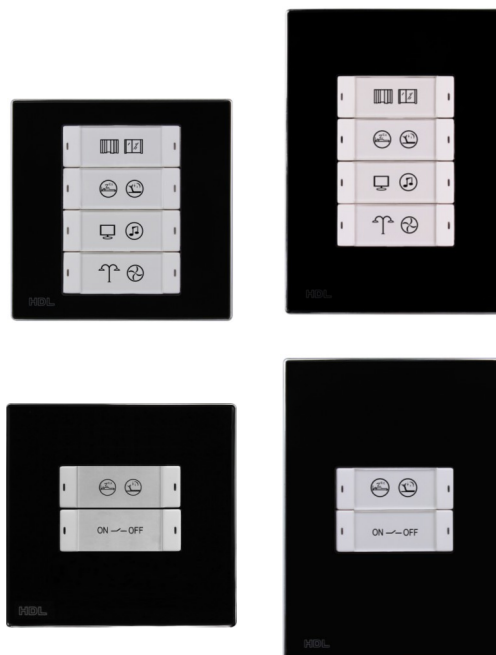
- It must work with Power Coupler Interface (be installed in wall-box).
- **Special Programming** – This device is designed for professional KNX installation. It can only be programmed by ETS software.
- **Cable Connections** – Do not get wrong connection for Black and Red wires.
- **Mounting Location** –When installed outdoors, pay attention to waterproof.
- **Voltage** - The input of voltage must be between 21-30VDC.

Safety Precautions



- Installation-Wall box.
- KNX TP1 bus is SELV and they must be isolated and segregated from mains.
- Do not get wrong connection on positive and negative for the bus cable.
- Do not let liquids and corrosive gases come into contact with the module, it will damage this devices.
- Do not get AC voltage into Bus wire , it will damage all of device
- Ensure good ventilation.

Overview



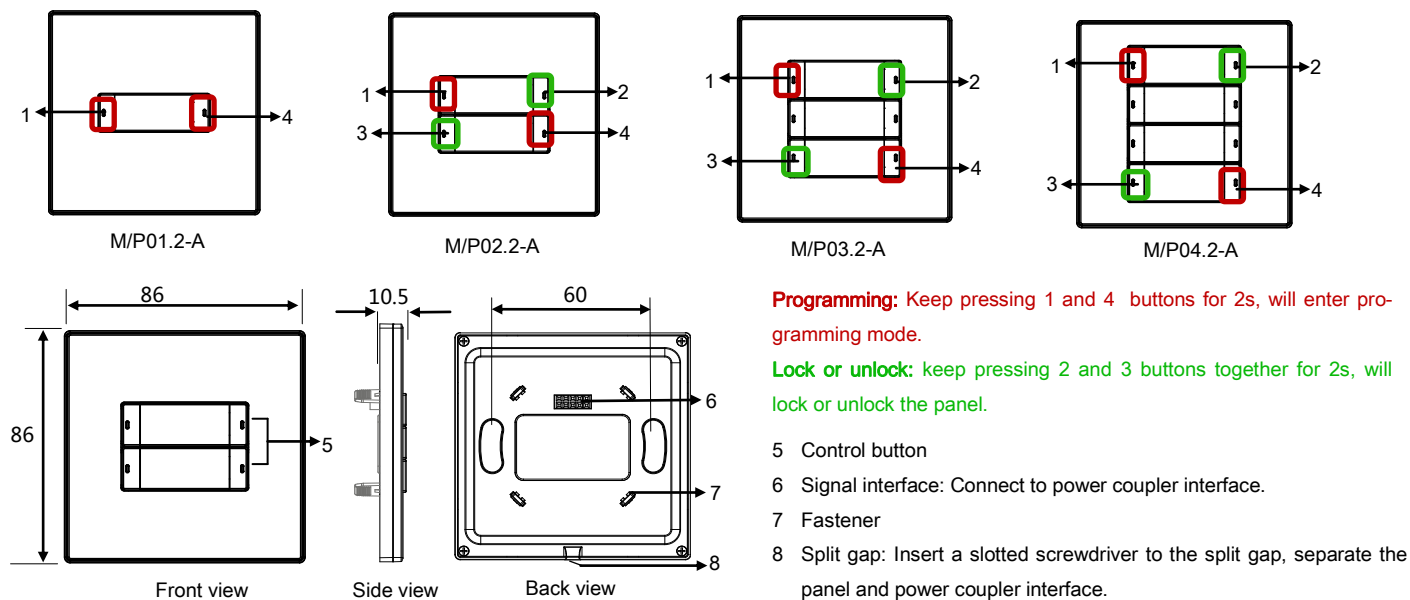
HDL KNX / EIB M/P01.2-A, M/P02.2-A, M/P03.2-A, M/P04.2-A, multifunction Panel controller include many kind of data point, can be used for many applications like lighting dimming, switch, curtain etc..

Functions

- Each rocker has 2 work modes: Combined button mode and independent button mode.
- Each rocker has backlight and LED indicator.
- It supports kinds of data point and function, include Switch control, Dimming, Shutter control, Flexible control, Scene control, Sequence control, Percentage control, Threshold control, Combination control, String(14bytes) controller, Button Lock, Button Trigger.
- Keep pressing the first and last button together for 2 seconds, the LED Indicators will flashing and the device enter programming mode.
- User can define button icon.
- Selectable plate and frame.

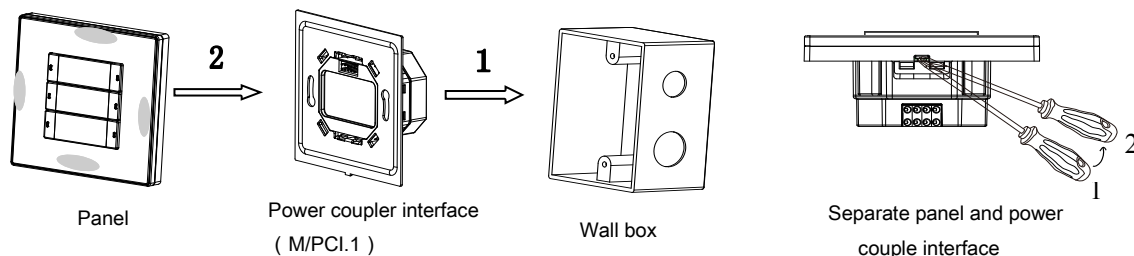


Layout and Wiring (Take EU as an example)



Note: US panel's dimensions are: H86x W116x D10.5(mm)

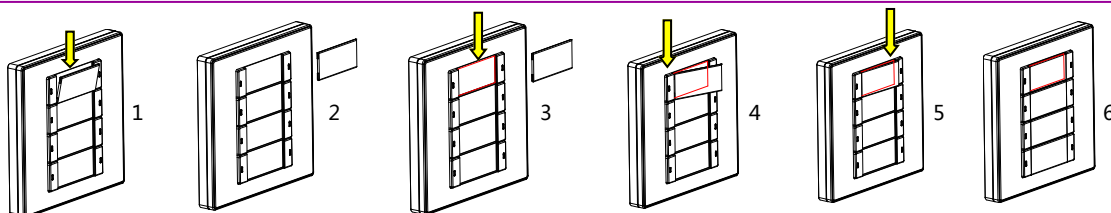
Installation



Installation: Hold the edge of panel, (shown as above), insert the power interface module vertically. Do not push the panel too hard.

Split: Insert a 2.5mm-screwdriver to the split gap, pry up position 1 to 2, then the wiring hole will open. Then separate the panel and power couple interface(M/PCI.1).

Change the button labels (As below shows)



Notes: Label dimension is 31.5mmX14.5mm, user can use same way to change each button label.

Package Contents

Device *1 / Datasheet *1 / Button label *2n (n is buttons number)